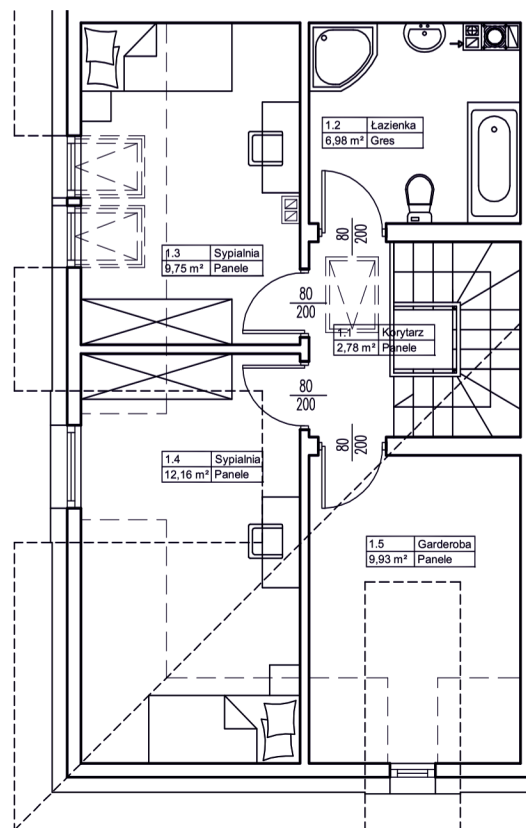
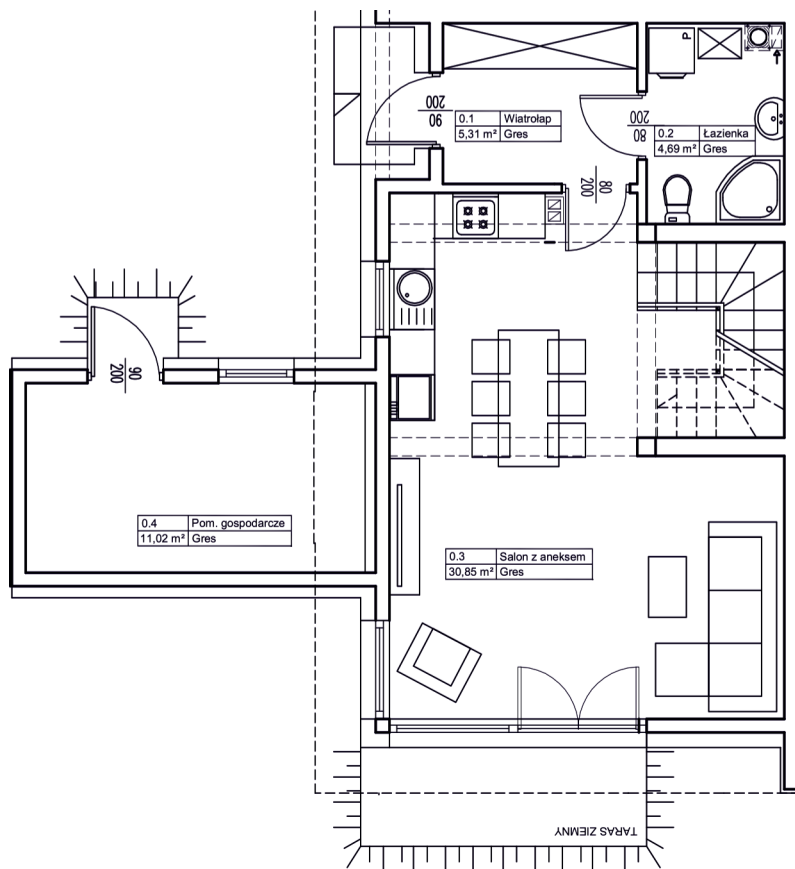


# Lokal nr. 4

## 93,47 m<sup>2</sup>

2dz8/70



### ZESTAWIENIE POWIERZCHNI:

Parter

|                      |                            |
|----------------------|----------------------------|
| 0.1 Wiatrołap        | 5,31 m <sup>2</sup>        |
| 0.2 Łazienka         | 4,69 m <sup>2</sup>        |
| 0.3 Salon z aneksem  | 30,85 m <sup>2</sup>       |
| 0.4 Pom. gospodarcze | 11,02 m <sup>2</sup>       |
| <b>RAZEM:</b>        | <b>51,87 m<sup>2</sup></b> |

Piętro

|               |                            |
|---------------|----------------------------|
| 1.1 Korytarz  | 2,78 m <sup>2</sup>        |
| 1.2 Łazienka  | 6,98 m <sup>2</sup>        |
| 1.3 Sypialnia | 9,75 m <sup>2</sup>        |
| 1.4 Sypialnia | 12,16 m <sup>2</sup>       |
| 1.5 Garderoba | 9,93 m <sup>2</sup>        |
| <b>RAZEM:</b> | <b>41,60 m<sup>2</sup></b> |

